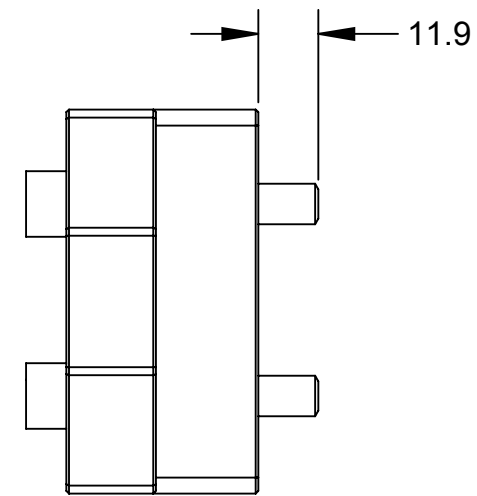
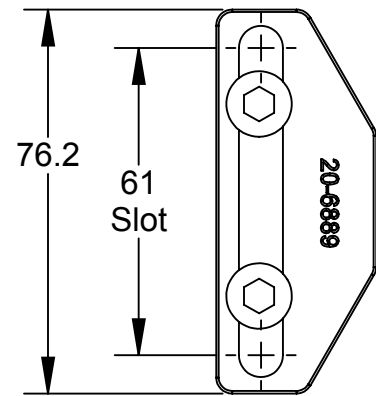
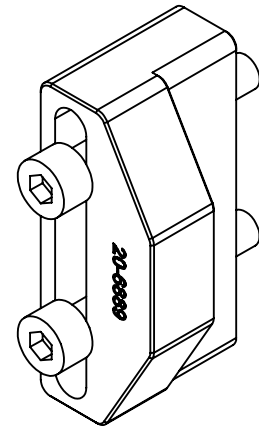
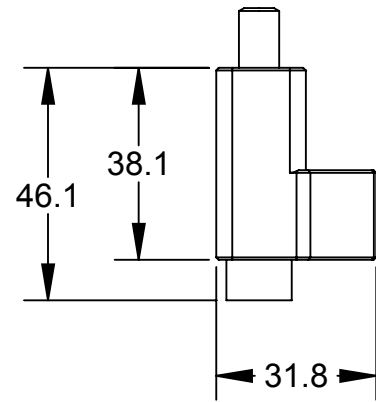
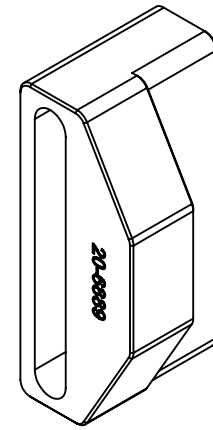
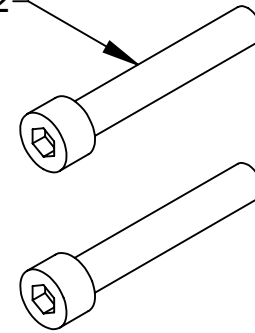


Rev.	Description	Initiator	Date
01	Initial Drawing	JMW	02/14/2014

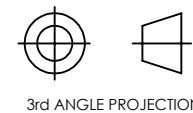


25X M8 SHCS  
242 / 100 in-lbs  
Note 1, 2



**Notes:**

1. Fasteners shipped loose. To be installed by customer.
2. Customer to use Loctite or similar thread locker and torque to listed torque value.



3rd ANGLE PROJECTION

ITEM NO.	QTY.	PART NUMBER	DESCRIPTION
1	1	9120-TSL-SS-7511	TSL Tool Stand Interlock Trip Dog Assembly
NOTES: UNLESS OTHERWISE SPECIFIED.		<p>1031 Goodworth Drive, Apex, NC 27539, USA            Tel: +1.919.772.0115 Email: info@ati-ia.com            Fax: +1.919.772.8259 www.ati-ia.com            ISO 9001 Registered Company</p> <p>PROPERTY OF ATI INDUSTRIAL AUTOMATION, INC. NOT TO BE REPRODUCED IN ANY MANNER EXCEPT ON ORDER OR WITH PRIOR WRITTEN AUTHORIZATION OF ATI.</p>	
DO NOT SCALE DRAWING. ALL DIMENSIONS ARE IN MILLIMETERS.			
DRAWN BY: J. Winterroth, 2/14/14		TITLE	
CHECKED BY: D. Norton, 2/18/14		TSL Tool Stand Interlock Trip Dog Assembly	
PROJECT # -	SHEET 1 OF 1	SCALE	SIZE
		2:3	B
		DRAWING NUMBER	REVISION
		9630-20-TSL-SS-7511	01